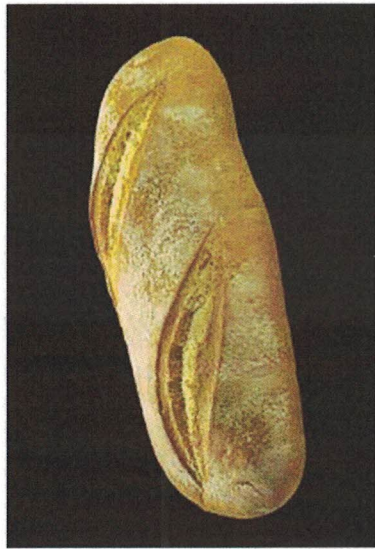
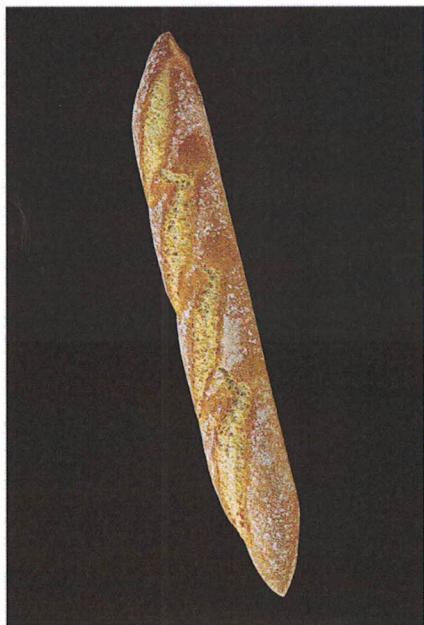




FICHA CHUSCO ANDALUZ 170 GR.



**PAN CAMPERO
MASA MADRE 375 GR.**



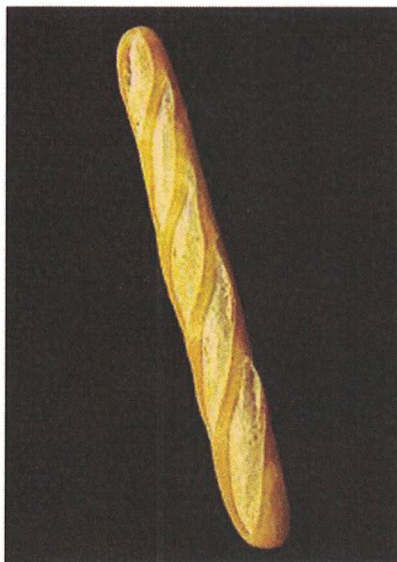
PAN RUSSTICO 280 GR.



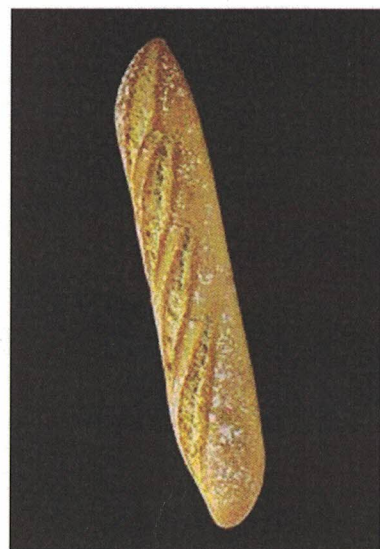
PAN SOJA 160 GR.



SUPERCAMPESIN 380 GR.



BAGUET 200 G. H



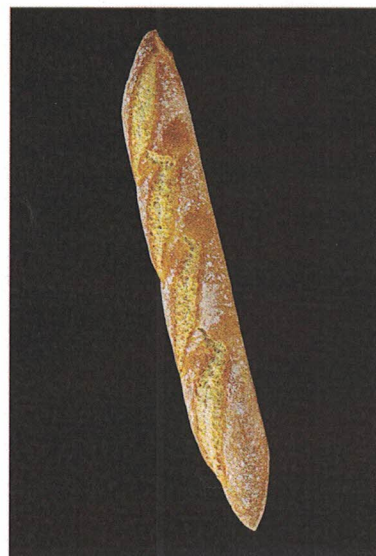
BARRA CAMPESINA 255 GR.



BAGUETTINA 110 GR.



BARRA CASTIZA 230 GR.



BARRA BOUTIQUE 280 GR.



BARRA GALLEGA 260 GR.